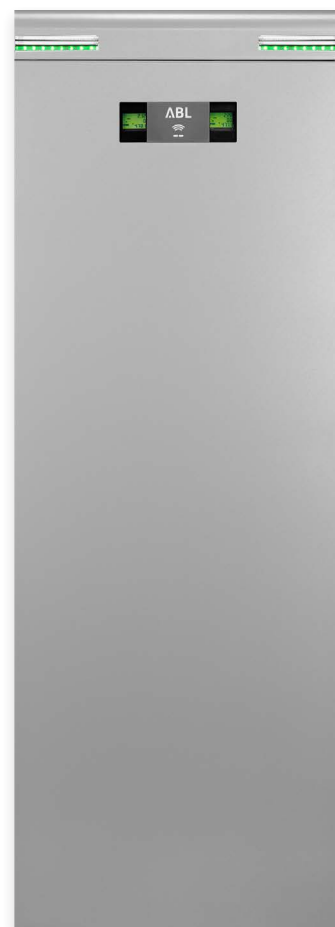


# Charging pole eMC3

Controller+/Extender+ with  
charging sockets  
44 kW

The eMC3 charging station, which is compliant with calibration law, has two internal Type 2 charging sockets. Thanks to its ability of charging two vehicles at the same, it is the ideal solution for public applications. In group installations, the Controller+ charging pole performs all the necessary functions for communication with a backend and for controlling up to seven eMC3 Extender+ charging poles. The double powder-coated metal housing is splash and dust protected. Rain runs off the curved cover towards the back. The plinth is designed so that the eMC3 charging pole is easy to install on any surface and appears to float. The eMC3 is equipped with two energy meters, overvoltage protection and two type A residual current circuit breakers with a 6 mA DC tripping threshold (RCCB type A EV). All ABL charging poles are “Made in Germany” and comply with the highest safety standards.



## GENERAL INFORMATION

|                     |   |
|---------------------|---|
| Model range         | eMC3  |
| Commodity code      | 85371091  |
| Packaging unit (PU) | 1 unit  |
| Dimensions PU       | 1.790 × 670 × 470 mm (H×W×D), shipped in carton on disposable pallet  |
| Items supplied      | Charging pole, printed manual, printed instructions on “Calibration law compliant charging”, installation kit |

**INPUT / MAINS SUPPLY**

|                       |  |
|-----------------------|--|
| External power supply | 3P4412, 3P4432: For supply cable sizes up to 5 × 95 mm <sup>2</sup> , AL / CU<br>3P4435, 3P4436: For supply cable sizes up to 5 × 50 mm <sup>2</sup> , AL / CU |
| Rated voltage         | 230 / 400 V (3-phase)  |
| Rated current         | 63 A   |
| Rated frequency       | 50 Hz  |
| Upstream fuse         | 63 A   |
| Domestic junction box | 3P4412, 3P4432: NH00 63 A of max. 95 mm <sup>2</sup>   |
| Connection            | 3P4435, 3P4436: Direct connection to high-current terminal blocks  |

**OUTPUT / VEHICLE CONNECTION**

|  |   |
|--|---|
| Charging port in acc. with IEC 62196-2 | Lockable Type 2 charging socket, 32 A, in acc. with IEC 62196-2 per charge point, automatic unlocking in case of grid connection loss |
| Output voltage                         | 230 / 400 V per charge point  |
| Max. charging current                  | 32 A per charge point   |
| Maximum output                         | 22 kW per charge point  |
| Load management                        | 3P4412, 3P4435, 3P4432: SBC   3P4436: Via Controller  |

**PROTECTION / INTEGRATED COMPONENTS**

|                                    |  |
|------------------------------------|--|
| MCB                                | 32 A, 4-pole, C characteristic per charge point  |
| RCCB                               | RCCB type A EV, 30 mA with 6 mA DC tripping threshold per charge point   |
| Energy meter                       | MID-compliant per charge point   |
| Compliance module                  | Logging Gateway (LGW)  |
| Load switching                     | Installation contactor, 4-pole, 40 A   |
| Weld detection                     | Contactor welding trips RCD  |
| Overcurrent protection             | Integrated into firmware, disconnection at 105% after 1,000 seconds, at 110% after 100 seconds, at 120% after 10 seconds |
| Temperature monitoring             | Internal, charging current reduction or shut down  |
| Domestic electricity meter         | 3P4412: eHZ adapter, 35 A upstream fuse   3P4432: Three-point meter with counter plug-in terminals, without back-up fuse |
| Lightning & overvoltage protection | Type 1 + Type 2 combined arrester  |
| Shut down (Standby)                | All poles  |

**COMMUNICATION / INTERFACES**

|                                   |   |
|-----------------------------------|---|
| Operating status indicator        | LED   |
| Access control                    | RFID  |
| Communication EV                  | In acc. with IEC 61851-1 Mode 3                       |
| Communication Controller/Extender | RS485   |
| Backend communication             | LAN, optional LTE, OCPP 1.6 and 1.5 (Controller only) |

**STANDARDS / DIRECTIVES**

IEC 61851-1

IEC 61439-7 ACSEV

In acc. with MessEV Modul B

**OPERATING CONDITIONS**

|                                |                                 |
|--------------------------------|---------------------------------|
| Storage temperature            | -30 to 85°C                     |
| Operating temperature*         | -25 to 40°C                     |
| Relative humidity              | 5 to 95%, no condensation       |
| Class of protection            | I                               |
| Overvoltage category           | III                             |
| Degree of pollution            | 3                               |
| Degree of protection (housing) | IP44/IP54 (plugged / unplugged) |
| Impact strength                | IK10                            |
| Maximum elevation              | ≤ 2,000 m AMSL                  |
| Power dissipation              | 14 W                            |

**HOUSING**

|                            |   |
|----------------------------|---|
| Type                       | Mounting pole   |
| Fixing type                | Screw fixings to prefabricated concrete foundation                    |
| Material (housing / cover) | Steel   |
| Housing colour             | DB 703, powder coated   |
| Cover colour               | DB 701, powder coated   |
| Locking mechanism          | Grip handle, prepared for the installation of a profile cylinder lock |
| Dimensions                 | 1,661 × 590 × 220 mm (H×W×D)  |
| Weight (net)               | Approx. 90 kg   |

**MODEL OVERVIEW**

|                  | Product number | Calibration law compliance |
|------------------|----------------|----------------------------|
| eMC3 Controller+ | 3P4412         | Yes                        |
|                  | 3P4432         | Yes                        |
|                  | 3P4435         | Yes                        |
| eMC3 Extender+   | 3P4436         | Yes                        |

## OPTIONAL ACCESSORIES

### eMC3 Controller+



LTE accessory package

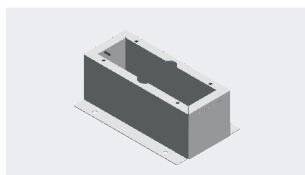
E3BLTE2

### eMC3 Controller+ | Extender+



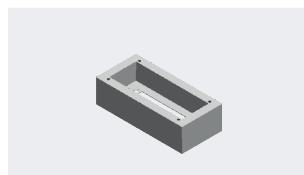
Prefabricated  
concrete foundation

EMC9999



Plinth 160 mm

EMC9996



Plinth 100 mm

EMC9994



RFID key fob

100000253



Type 2 charging cable  
(several variants)

CC2010, [...], CC3275



Type 2 – Type 1  
adapter cable

LAKK2K1

## PRODUCT DIMENSIONS



Subject to change: All performance characteristics, technical and other specifications are subject to change without prior notice.